



Russia, Belarus – practical issues on legality verification

Roman Verin – Director NEPCon-Russia



Global World: USA – CHINA - RUSSIA








Lumber Liquidators Holdings, Inc. (LL) ★ Watchlist

13.34 -0.60 (-4.30%) NYSE - As of 11:01am EDT

Beat the market

Get the app



+ Indicator + Comparison 1d 5d 1m 3m 6m YTD 1y 2y 5y 10y Max   Linear  Go To Symbol    



Timber Risk Assessments

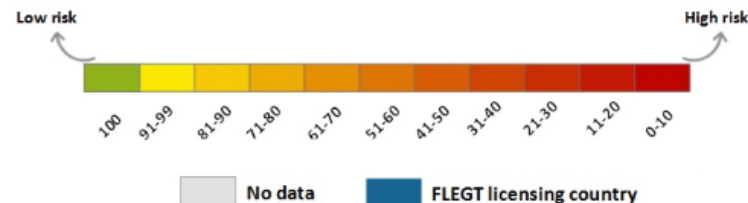
Risk Score:

USA – 93

CHN – 67

RUS – 6

BLR – 94



ILLEGAL LOGGING AND TRADE – HOW THEY DO IT?



What can you do?

Corruption perception index in 2016



RUSSIA: Bans and restrictions

Logging ban: Ban on logging Korean pine
Other restrictions: Russia might implement a temporary export ban on birch logs.

BELARUS: Bans and restrictions

Log export ban: The export of pulpwood, veneer logs and sawn logs is prohibited unless otherwise authorised by the President of Belarus

Key Documents



Forest level



Trade and transport



Export and custom

Field Inspections

You can check!

What can help?

- Certification schemes
- National information systems
- Your own DDS
- EUTR Monitoring organizations



Russian forest sector information system

GOAL - Suppression of illegal logging and illegal timber trade

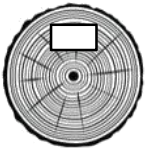
TOOLS:



A ban on the disposal of timber harvested by citizens for their own needs



Wood transport only with accompanying document



Marking of wood of valuable species (oak, beech, ash)



Declaration of transactions with timber



The introduction of administrative liability for violation of forest legislation of accounting of wood and transactions with it



The creation of the unified state automated information system of accounting of wood and transactions with it. <http://www.lesegais.ru/>

How can you check?



That is the question